

# Capability Statement



# Capability Statement



## WHO ARE WE

We are a dedicated insolvency accounting practice with extensive corporate and personal insolvency experience. Our firm is an independent member of HLB International and the HLB Mann Judd National Association – a worldwide organisation of respected accounting firms and business advisors.

We have access to a significant amount of high quality resources and personnel from around the national network.



## WHY WE DO WHAT WE DO

We appreciate that managing a struggling business and juggling debt is distracting and stressful for your clients. We derive satisfaction and motivation by helping people understand their options and by creating a clear plan to escape a cycle of uncertainty and worry.



## WHAT WE DO

We are specialists in insolvency and conduct all types of corporate and personal insolvency matters, including:

- Voluntary Administrations
- Creditors' Voluntary Liquidations
- Members' Voluntary Liquidations
- Small Business Restructuring
- Simplified Liquidations
- Receiverships
- Bankruptcy
- Personal Insolvency Agreements
- Informal Administrations
- Safe Harbour
- Dispute Resolution

We have also conducted investigations and forensic accounting engagements for private parties





# Capability Statement



## OUR APPROACH

Our practice has built a strong reputation amongst our extensive professional network by providing objective and expert advice and by always maintaining an empathetic and respectful approach. We are skilled at clearly communicating viable options and we dispel the misconceptions about insolvency.

We explore various formal and informal options that are available with an emphasis on the best interests of stakeholders and our aim is to make this process as hassle-free and as straightforward as possible.



## OUR STANDARDS

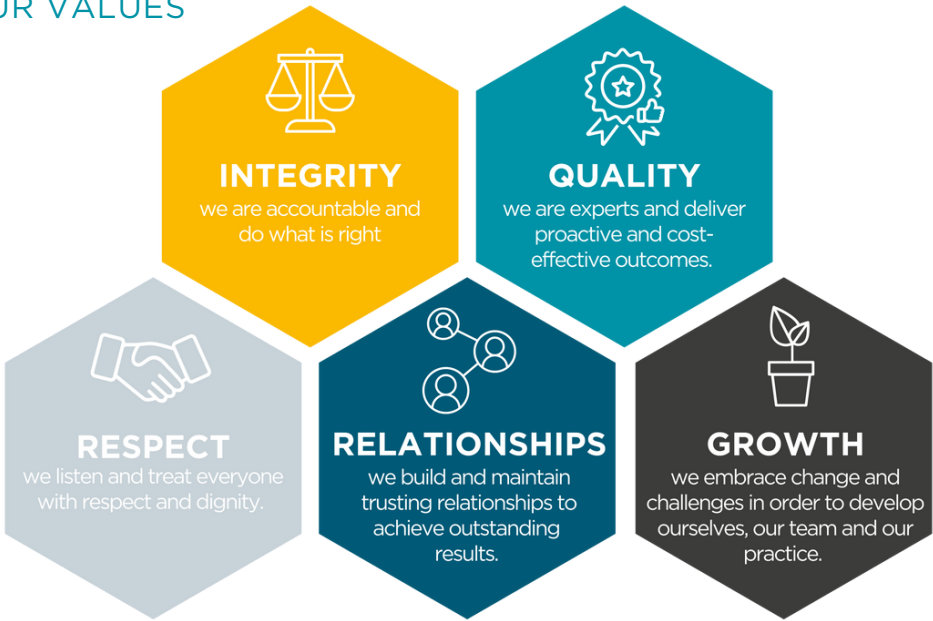
HLB Mann Judd Insolvency WA adhere to the requirements of the ARITA Code of Professional Practice and our firm belongs to and upholds the codes and professional standards of ARITA and the CAANZ.



# Capability Statement



## OUR VALUES



## OUR RECOGNITION

### Network of the Year



INTERNATIONAL ACCOUNTING BULLETIN





**GREG  
QUIN**  
PARTNER

**QUALIFICATIONS AND  
MEMBERSHIPS**

- Registered Liquidator
- Member of the Chartered Accountants Australia and New Zealand
- Professional Member of the Australia Restructuring Insolvency & Turnaround Association

**AREAS OF EXPERTISE**

- Building and Construction
- Engineering
- Franchises
- Hospitality (hotels, restaurants, bakeries)
- Managed Investment Schemes
- Manufacturing
- Mining
- Retail and Wholesale
- Transportation



**Capability Statement**

Greg is a Partner at HLB Mann Judd Insolvency WA with over 14 years of corporate and personal insolvency experience. Greg is a Registered Liquidator and manages the corporate and personal insolvency appointments managed by the firm.

As the general manager of HLB Mann Judd Insolvency WA, Greg oversees both the daily operations of the practice and the insolvency appointments worked on by the team.

Greg is a member of Chartered Accountants Australia and New Zealand, a Professional Member of the Australian Restructuring, Insolvency and Turnaround Association and is an advocate for the development of the local insolvency industry in Perth.

Greg exemplifies the values of the practice by maintaining an objective and balanced approach to complex matters, whilst always engaging with stakeholders in a professional and respectful manner.

---

**CONTACT INFORMATION**

M: 0402 943 091  
E: [gquin@hlbinsol.com.au](mailto:gquin@hlbinsol.com.au)





# KIM WALLMAN

## PARTNER

### QUALIFICATIONS AND MEMBERSHIPS

- Registered Liquidator
- Registered Trustee in Bankruptcy
- Member of the Chartered Accountants Australia and New Zealand
- Professional Member of the Australian Restructuring Insolvency & Turnaround Association

### AREAS OF EXPERTISE

- Business Recovery and Insolvency
- Industry Specialisations
- Building and Construction
- Engineering
- Entertainment
- Farming
- Franchises
- Hospitality (hotels, restaurants, bakeries)
- Managed Investment Schemes
- Manufacturing
- Mining
- Retail and Wholesale
- Transportation
- 



## Capability Statement

Kim Wallman is a Partner at HLB Mann Judd Insolvency WA. Prior to establishing his practice in 1995, Kim was an insolvency Partner at one of the Big 4 firms. Since being in public practice Kim has specialised in insolvency and reconstruction involving all types of personal and corporate administrations.

Kim's 35 years of experience have embraced a wide range of industries. In many cases, by necessity Kim has undertaken the tasks of restructuring companies whilst trading on, including implementation of day to day management controls and reporting systems to ensure the Administrator's policies are being adhered to.

Additionally, Kim is recognised for his ability to negotiate settlements in complex and difficult circumstances including the liaison with financiers, creditors, Government institutions and taxation authorities, to maximise the return to all stakeholders.

As the Appointee, Kim is 'hands on' in each administration and creditors, directors and other stakeholders can speak with him at any time during the course of an insolvency administration. Kim maintains his strong reputation through building trust, providing fair and expert advice and always maintaining an empathetic, compassionate mindset.

---

### CONTACT INFORMATION

M: 0411 619 256

E: [kwallman@hlbinsol.com.au](mailto:kwallman@hlbinsol.com.au)





*"Whatever your circumstances, we will find the best solution to suit your needs."*

*- Greg Quin, Partner*



To find out how HLB Mann Judd Insolvency WA can help you, get in touch with us for a no obligation consultation.

**LEVEL 3, 35 OUTRAM STREET, WEST PERTH 6005**

P: +61 (08) 9215 7900 E: [info@hlbinsol.com.au](mailto:info@hlbinsol.com.au)

W: [hlbinsolvencywa.com.au](http://hlbinsolvencywa.com.au)



[HLBINSOLVENCYWA.COM.AU](http://HLBINSOLVENCYWA.COM.AU)

TOGETHER WE MAKE IT HAPPEN